

# EXPERIENTIAL FISH SCALE

IPS-EXP-003

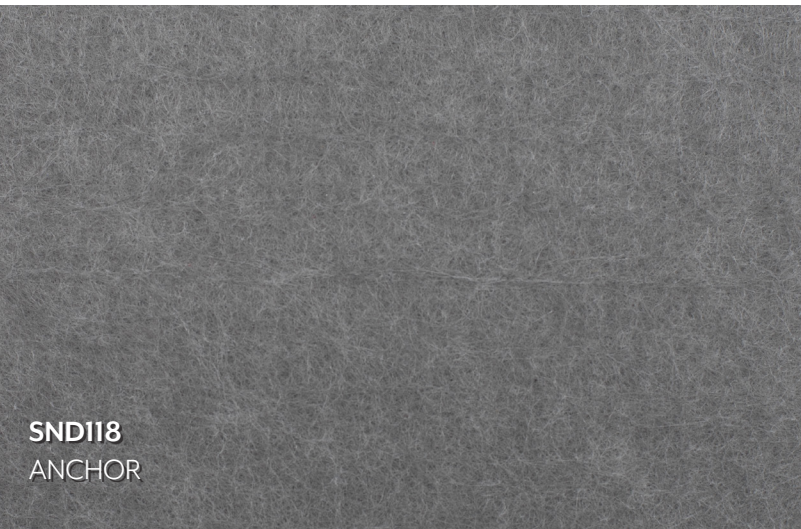
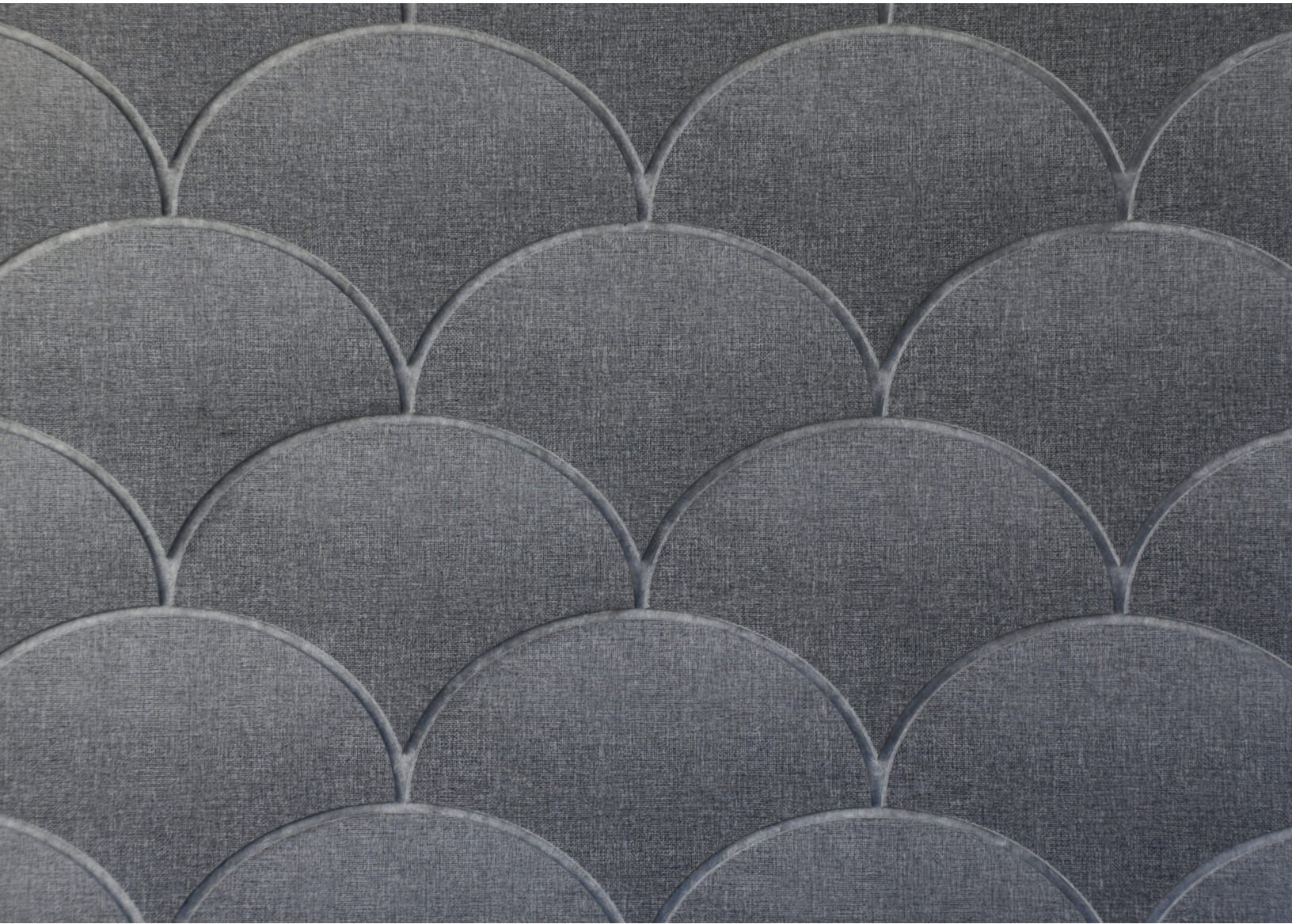




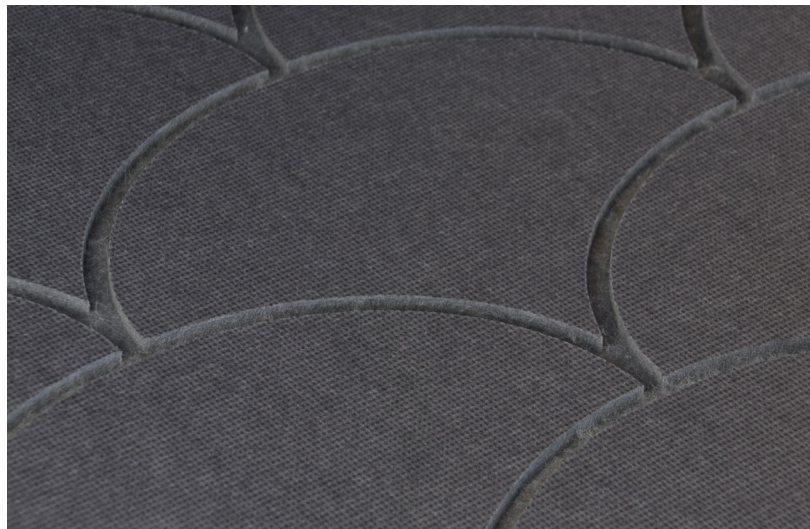
# FISH SCALE

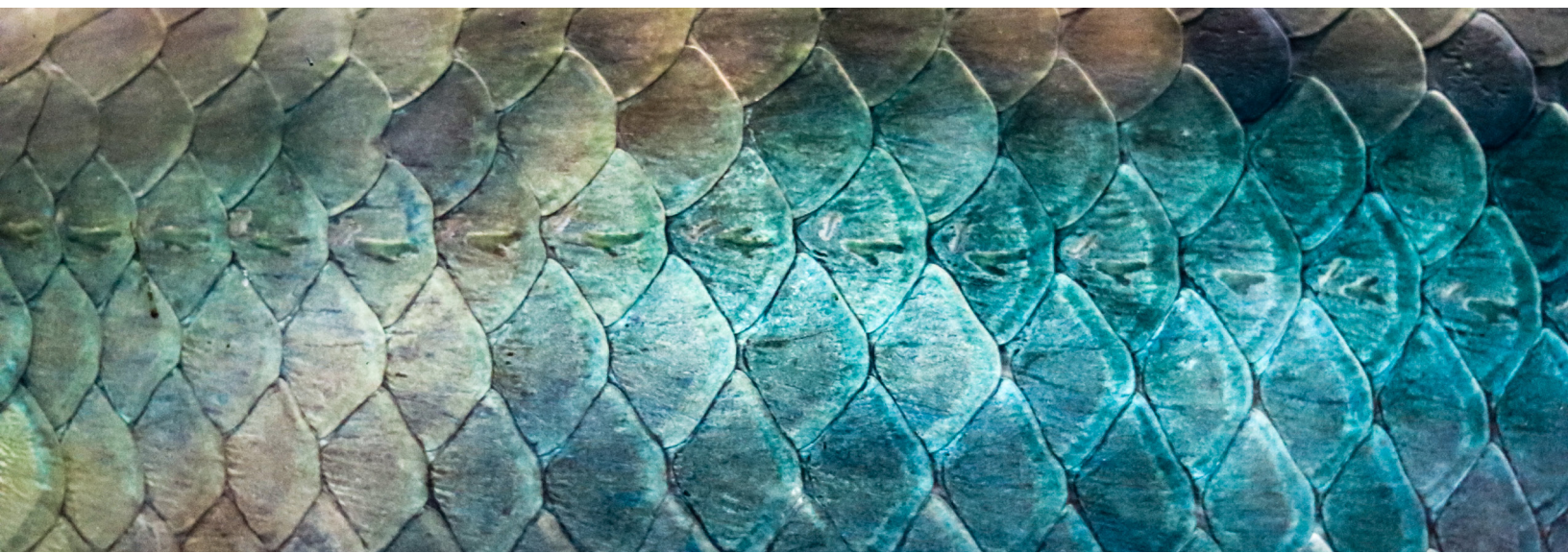
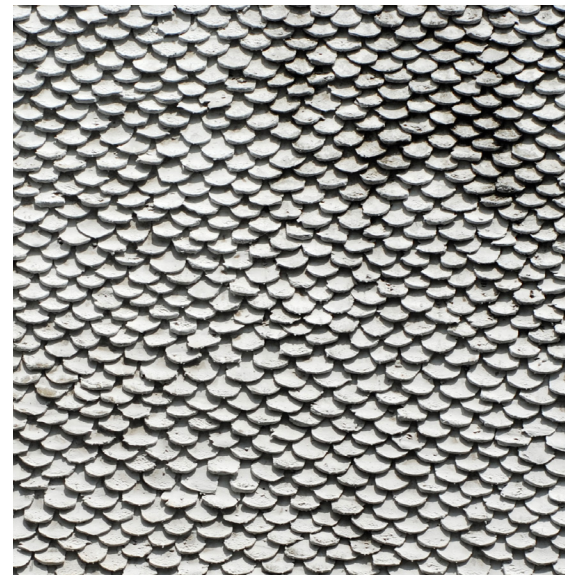
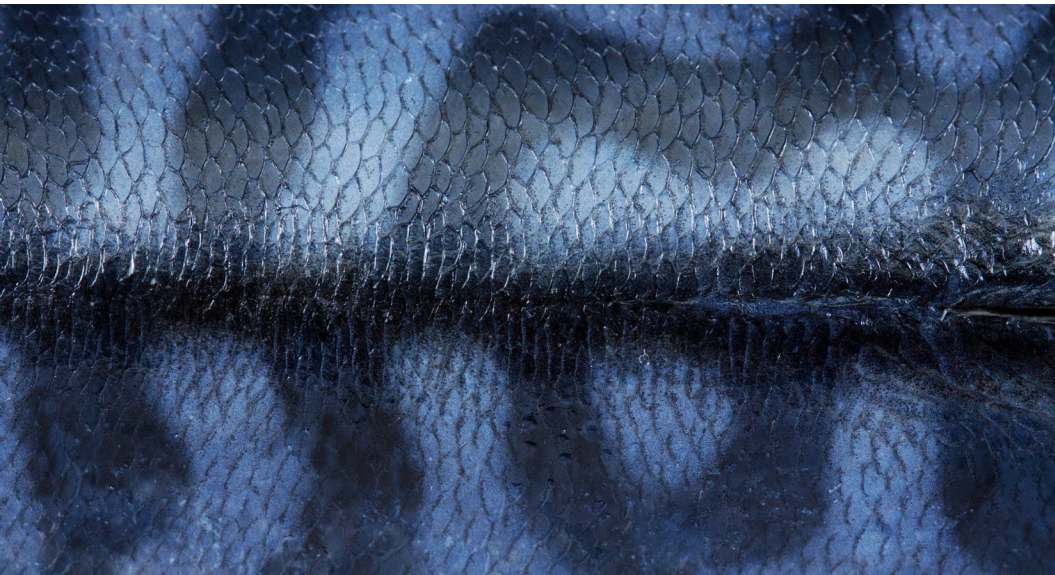
## INTRODUCTION

Fish Scale from the Experiential collection creates a stunning focal point that transforms your space. The pattern embodies the perfect representation for a backdrop that creates an interesting talking point while not distracting from all other things. The lively design of Fish Scale brings a sense of movement and prestige unlike any other on the market.



SND118  
ANCHOR





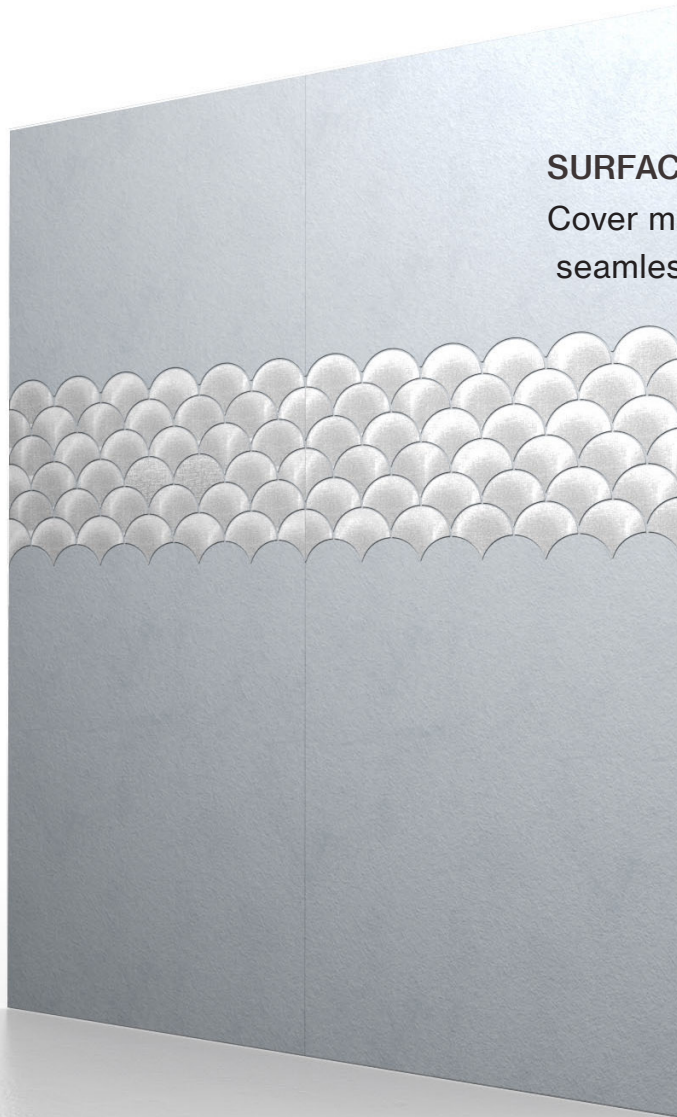
## EXPERIENCE IRIDESCENCE

Imagine the feeling of the overlapping scales as they descend across the surface. The impact colors and textures are a tough act to follow, but Fish Scale captures the essence and simplifies the rest to create a livable and comfortable composition.

# FISH SCALE

CSICREATIVE®

APPLICATION



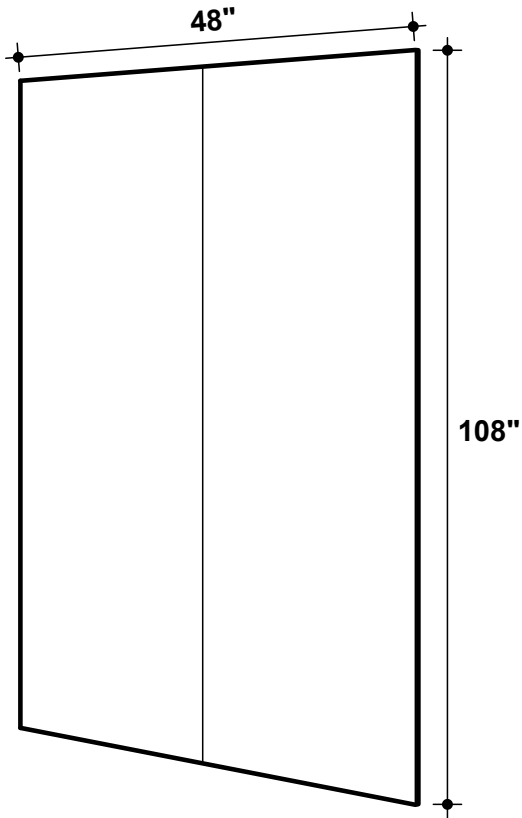
## SURFACES

Cover massive wall areas with seamless patterns.

# FISH SCALE

CSICREATIVE®

## INSTALLATION

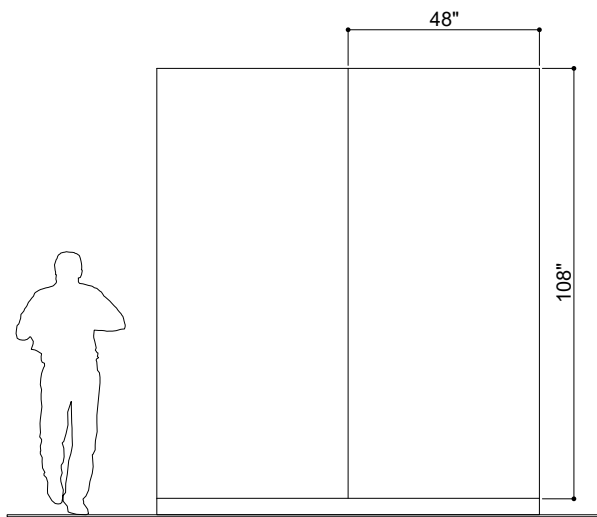


## SURFACES

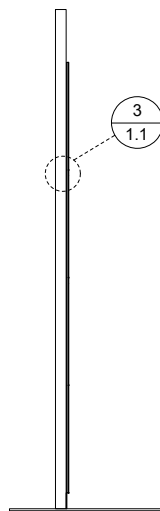
Quickly and easily apply large wall areas with a variety of attachment methods, including Direct Adhesion, Peel-And-Stick Adhesion, Clip Systems, and simple Snap-In Mounting.



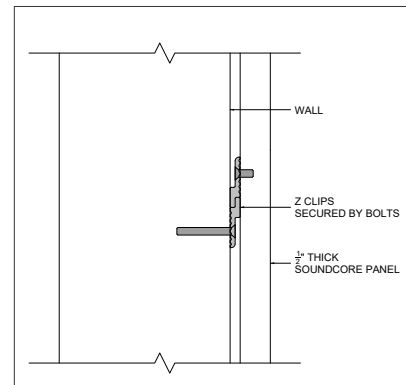
④ TOP VIEW



① FRONT VIEW



② SIDE VIEW



③ DETAIL VIEW

# FISH SCALE

CSICREATIVE®

## SPECIFICATIONS

<b>PRODUCT ID</b>	IPS-EXP-003
<b>CONTENT</b>	Soundcore® Recycled PET acoustic felt, Thermaleaf® Inherently Fire Retardant Foliage, and Elements veneered Recycled PET Acoustic Felt
<b>DURABILITY</b>	Impact resistant, shock absorbant
<b>WEATHERING</b>	Non-deteriorating, non-hygroscopic, colorfast
<b>MAINTENANCE</b>	Clean with vacuum or light dusting
<b>WARRANTY</b>	Comes with industry-leading standard warranty
<b>ENVIRONMENTAL</b>	LEEDv4, VOC free, 100% recyclable, non-toxic, non-allergenic, anti-microbial
<b>INSTALLATION</b>	CSI Installation Systems are product specific (see Installation page)
<b>ACOUSTICS</b>	0.60 NRC
<b>FLAMMABILITY</b>	ASTM E84: Class A
<b>SUSTAINABILITY</b>	Made from 60% recycled content and is 100% recyclable

# COLORWAYS

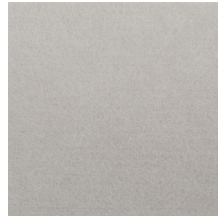
## SOUNDCORE® RECYCLED PET ACOUSTIC FELT



SND037 Paper



SND019 Linen



SND130 Buckskin



SND102 Morning Fog



SND114 Lunar Dust



SND131 Abalone



SND129 Dried Thyme



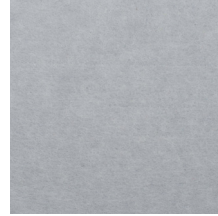
SND126 Wolfhound



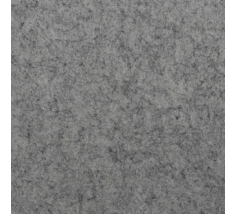
SND105 Storm Cloud



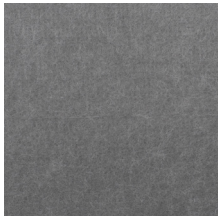
SND038 Inkwell



SND110 Starry Night



SND125 Chinchilla



SND118 Anchor



SND115 Mako



SND124 Ice Floe



SND128 Arctic Ocean



SND117 Serene



SND123 Chrysocolla



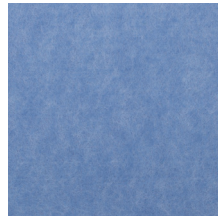
SND116 Blue Marlin



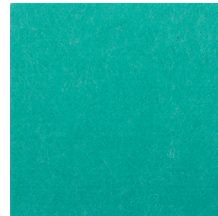
SND101 Commodore



SND121 Apatite



SND042 Denim



SND112 Tulum



SND107 Grasshopper



SND113 Gruner



SND106 Goldfinch



SND104 Pumpkin



SND108 Ablaze



SND127 Burnt Toast



SND122 Briquette



SND105 Sand Dollar



SND109 Macadamia



SND111 Lanai



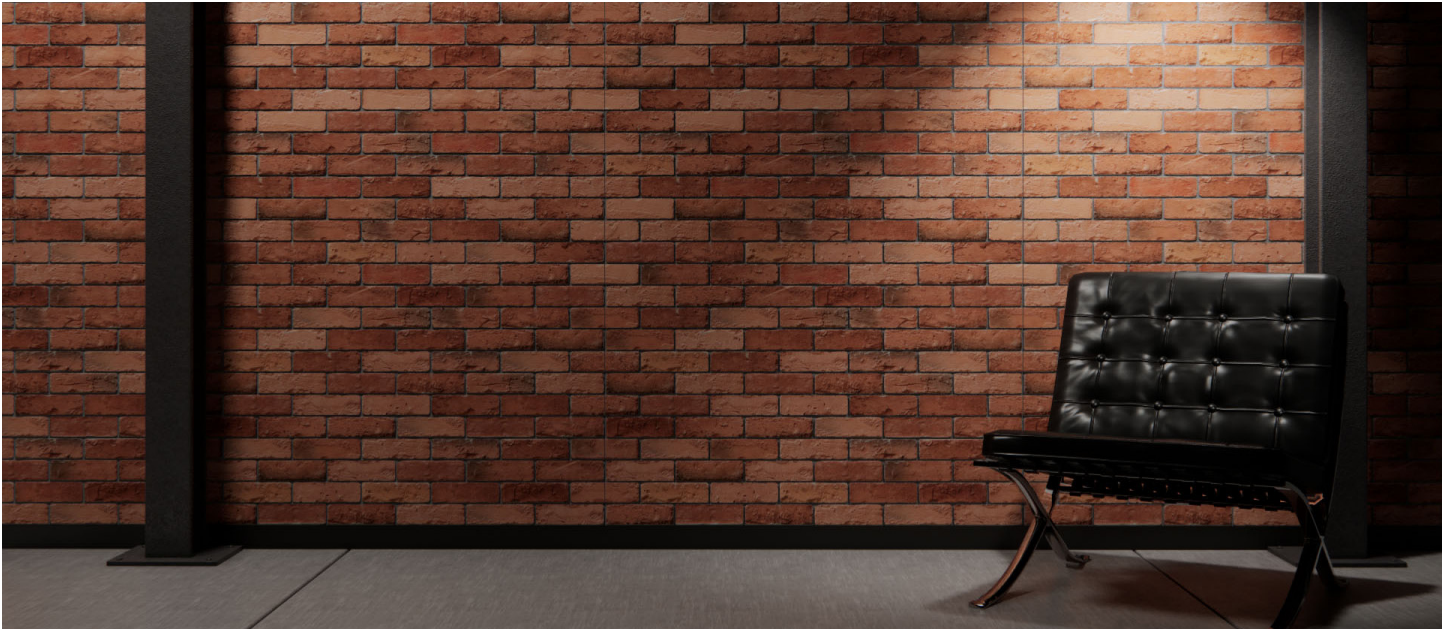
SND034 Granite Peak



SND132 Cast Iron



# OUR MISSION



## EXPERIENTIAL SPACES

Our goal is to create spaces that feel better.

It's easy to visualize a space with architectural acoustics, but even the most detailed renderings couldn't convey the experience of actually being there. When sound is properly controlled within a space, it creates focus and calmness that you can actually feel. We want to help you turn off the droning machinery in the back of your mind. We fabricate custom solutions that visually suit your space while building towards a more soothing holistic experience. This creates spaces where people want to be – where they want to work, where they want to sleep, exercise, create, study, and relax.